

Tools Needed:

- 1/4" drill bit
- 5/8" drill bit
- Power Drill
- 7/16" socket or wrench
- Pen or pencil for marking

Included:

- Power Shelf
- 12 Volt Battery
- 12 Volt Solar Panel
- Multifunction Charging Cable
- Two 1/4" x 3/4" bolts, lock washers, and nuts



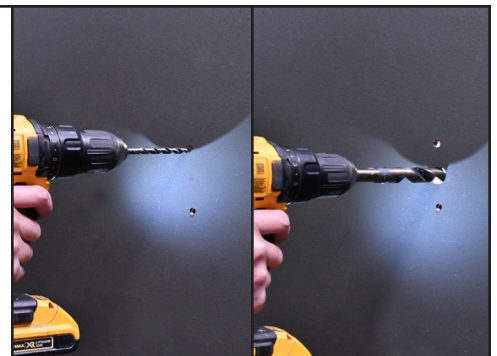
1. Determine location where you want to mount the Power Shelf.



3. Open access panel and mark position of top, bottom and center holes.



4. Using 1/4" drill bit, drill top and bottom mounting holes. Using 5/8" drill bit, drill center hole.



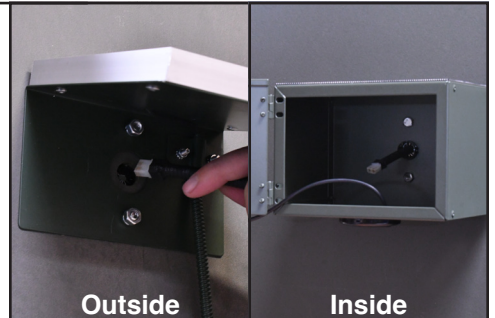
5. Install Power Shelf with the two 1/4" x 3/4" bolts supplied in solar panel packaging. For walls thicker than 1/4", you will need to obtain longer bolts - 1/2" longer than the thickness of the wall.



6. Install Solar Panel on the outside of blind using same bolts. Install lock washers and tighten nuts using 7/16" socket or wrench.



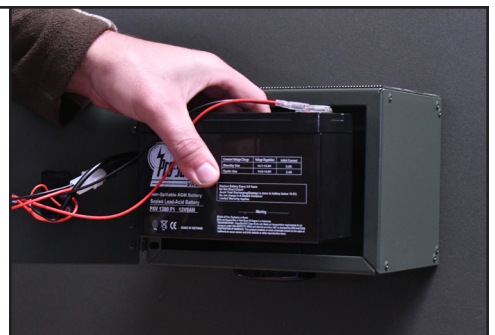
7. Run Solar Charger cable through hole from outside to inside of blind. Sealant is recommended around solar panel cable.



8. Connect Solar Panel to wiring harness inside the Power Shelf.



9. Connect and install battery into the Power Shelf.



10. Close access door.

